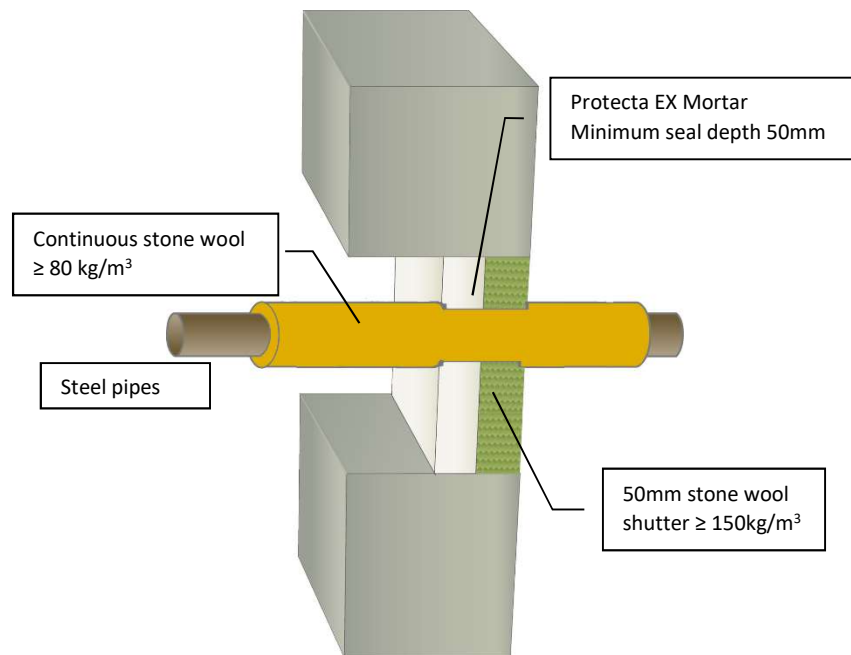


Protecta EX Mortar - Metal Pipe with Continuous Insulation in Concrete Wall

System/FPA Register ID# FC195

Installation Instructions

1. Ensure the faces of the aperture opening are free of dust and any other contaminants. The faces may be moistened for better adhesion.
2. The seal can be positioned to either side of the construction or anywhere in between.
3. When installing Protecta® EX Mortar in hollow floor slabs or boards, level the fire seal with the soffit side. Ensure there is sufficient thickness of concrete below the void for the depth of mortar. Where this is not the case, tubular voids should be filled with stone wool normally the same thickness as the depth of the floor slab.
4. Install a stone wool shutter board to achieve the required thickness of mortar. Make sure that this achieves a very tight seal – any small openings should be sealed with Protecta® FR Acrylic
5. Pour clean water into a suitable mixing vessel and pour enough mortar to obtain the required consistency. Mix well to avoid lumps. Always add the mortar to the water, do not reverse this mixing process.
6. Once the desired consistency is achieved pour or trowel the mortar onto the shutter board making sure that it flows into all corners and around services. Apply a firm pressure to the mortar to eliminate any trapped air bubbles. Build up to the required depth.



Minimum separations and limitations

An aperture can include several services, and they may also be different. Services within the system Protecta® FR Board seal do not require a minimum separation, except pipes where pipe insulation penetrates the seal and plastic pipe penetrations which should be a minimum of 30 mm from other services in the aperture. Services should be a minimum of 25mm from seal edges. The total amount of cross sections of services (including insulation) should not exceed 60% of the penetration area. The minimum permitted separation between adjacent apertures is 200mm.

Products	Protecta EX Mortar Stone wool shutter
Application	Fire stopping of insulated steel pipes in rigid walls.
Construction	Minimum wall thickness of 150mm and comprise aerated concrete or concrete with a minimum density of 650kg/m³

Fire & Sound classification

Steel pipes ≤ Ø219mm with 30mm thick stone wool insulation in maximum apertures 1200 x 2400mm FRR -/120/90

Sound reduction (seal only) STC 64



ETA 21/0071 FAS 210027 AS1530.4-2014 AS4072.1-2005



Protecta®

Polyseam Ltd, 15 St Andrews Road,
 Huddersfield, West Yorkshire, HD1 6SB
 Email: post.uk@polyseam.com

As a part of our policy of on-going product development and testing, we reserve the right to modify, alter or change product specifications without giving notice. All information contained in this document is given in good faith and is provided for guidance only. Any drawings provided are for illustrative purposes only. As Polyseam has no control over the methods or competence of installation and of prevailing site conditions, no warranties, expressed or implied, is intended to be given as to the actual performance of the product mentioned or referred to herein and no liability whatsoever will be accepted for any loss, damage or injury arising from the use of the information given.

For all technical details on the products specified please refer to the technical data sheets that can be found on www.firestopcentre.co.nz

Signed and approved:

Sheet size:	Drawn date & no:
A4	16/1/21

Drawn by:
K.B